

# IP Multihoming Service

## Efficient and resilient IP connectivity

### A solution that makes your life easier

Interxion IP Multihoming service (IMH) delivers a complete turnkey service, providing data center customers with high levels of network resilience on multiple Internet backbones. IMH was developed in response to customer demand for reliable network availability that enables you to host your online content on multiple backbones simultaneously. Interxion IP Multihoming service provides superior performance and resilience compared with hosting on a single network.

Internet connectivity failure and link overloads are the principal causes of wide-area network (WAN) downtime and disrupted online services, which result in business loss, customer dissatisfaction (user access denial) and diminished productivity. Improvements in service delivery has driven companies to consider alternatives to the standard single-homed IP provider solution. Companies prefer not to embark on in-house or self-managed solutions, which require substantial expenditures in hardware and management.

Now, Interxion delivers a solution that works, making your life easier.

### Maximum Internet link performance

IMH can be leveraged to improve WAN performance, lowering bandwidth costs and optimizing the way in which upstream links are used:

- Outgoing business traffic is load-balanced across multiple networks.
- The optimal path for each destination is determined by the BGP assessment of the shortest path to that destination

### Uninterrupted connectivity

With IMH, if IP connectivity from one provider fails, traffic is automatically re-routed to an alternate network without disrupting your service. IMH is the best solution for ensuring continued operation during connectivity outages or other service failures.

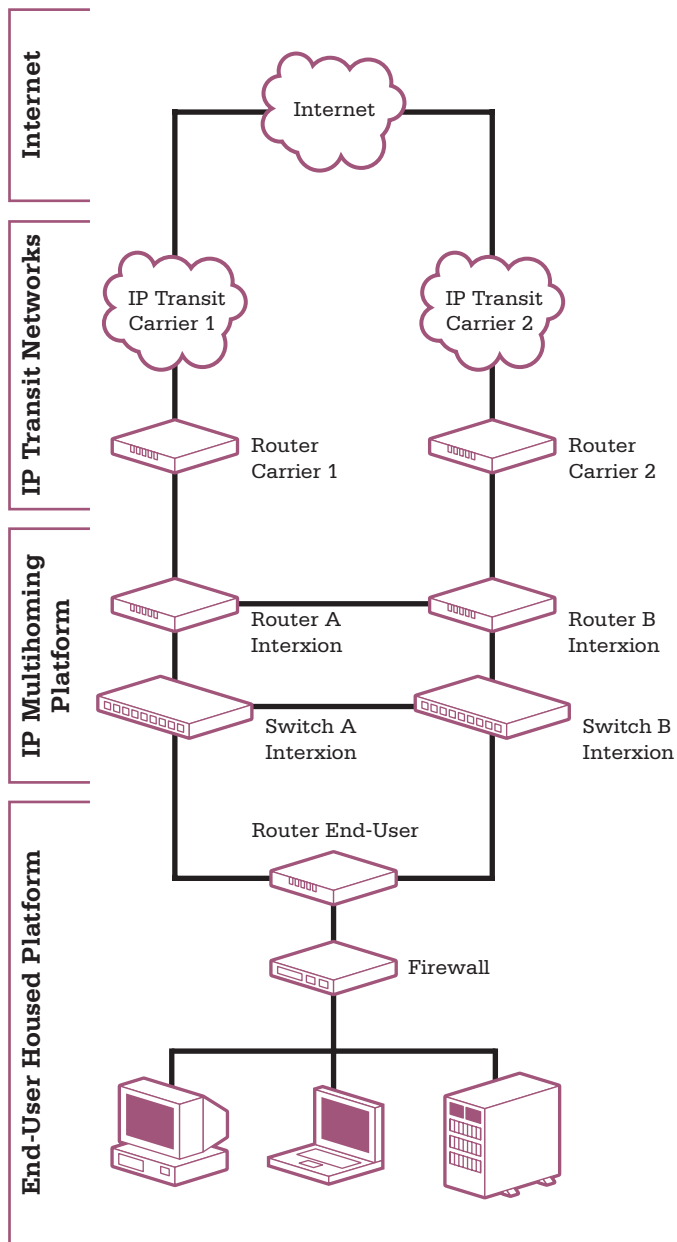
### High scalability

With the burstable model, you commit to a minimum and guaranteed level of bandwidth. But you can increase your usage up to the maximum available bandwidth during peak times or in the event of unanticipated traffic increases ("burst capability"). And, as your business grows, you can easily increase your bandwidth commitment.

### Key benefits

- Fully managed service
- No investment in hardware or in-house expertise
- Guaranteed committed bandwidth
- High scalability
- Guaranteed Service Levels for mission critical applications and users
- Essential backup in the event that a provider fails
- Load-balancing over multiple networks and consistent performance
- Traffic routing optimization using Border Gateway Protocol (BGP)

**Conceptual IP Multihoming Architecture**



**Guaranteed Service Levels**

Interxion IP Multihoming service is a multi-carrier IP access service guaranteeing 99.99% connectivity availability. To achieve this level, Interxion bases its service on a fully redundant platform.

**Access to a reporting portal**

You have secure and online access to your bandwidth consumption statistics via a login / password protected Web page.

**Additional features**

- Advanced reporting: easy to roll out and user-friendly, this option offers a quantitative analysis of the traffic that flows over your company's network.
- Customized IP Filtering: intended for end-users who do not have a firewall, this option uses filtering rules to reduce the risk of threats or attacks from the Internet. This 'let-it-go-through' policy is based on the application-port-flow association.

**Native language support - when you need it**

Dedicated to customer support and fault handling, our European Service Center (ESC) is available 24/7 to resolve your questions or concerns about IMH or any other Interxion product or service.

**About Interxion**

Interxion is Europe's leading provider of carrier-neutral data centers and managed services. With 20 data centers across Europe, Interxion supports over 800 customers, including enterprises, content providers, mobile service providers, and hosting and telecommunications companies.

Services such as equipment housing, on-site engineering and maintenance, backup and restore, and a range of monitoring services provide customers with solutions to better manage their ICT and Internet infrastructures. Interxion's data centers are supported by a central European Service Center with a multilingual team offering technical assistance to customers 24 hours a day.

Since its inception, Interxion has raised more than € 300 million from a leading group of investors around the world, including Baker Capital, Residex, Bear Sterns, BNP Paribas, Goldman Sachs, CSFB, and Morgan Stanley.

**Contact us:**

T +32 2 709 03 60  
 F +32 2 725 76 23  
 E infobe@interxion.com